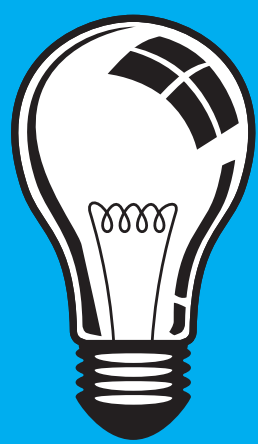
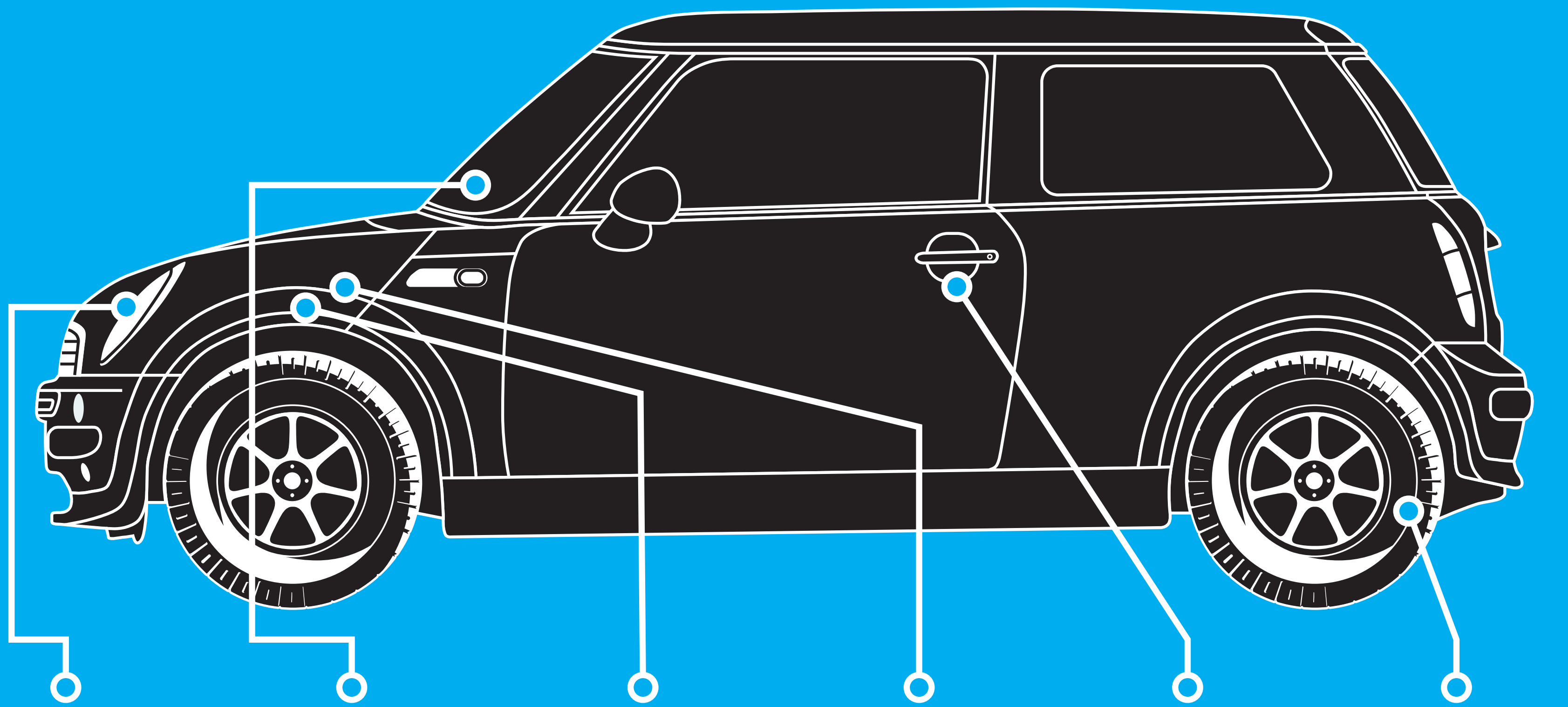


# Caring for your car this winter.

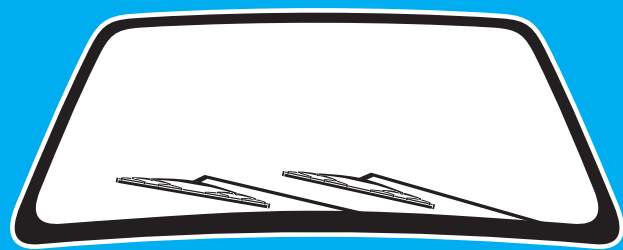
Freezing temperatures and wet weather can put a lot of strain on your car, so it's essential that you keep your vehicle in tip-top condition.

Follow our checklist and for total peace of mind, why not call into our centre for a free winter healthcheck?



## LIGHTS & INDICATORS.

Clean the glass to ensure brightness and check all the bulbs are working.



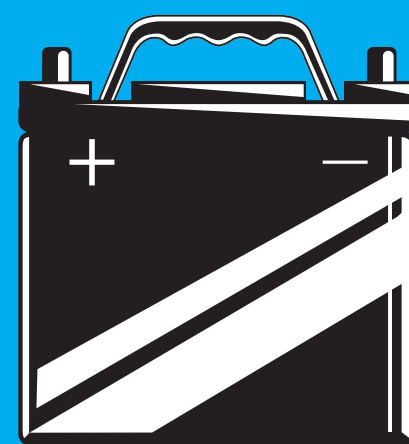
## WINDSCREENS & WIPERS.

Repair any cracks and chips which could get worse with freezing. Keep your screen clean inside and out. Also check the condition of your wipers and look for rubber deterioration.



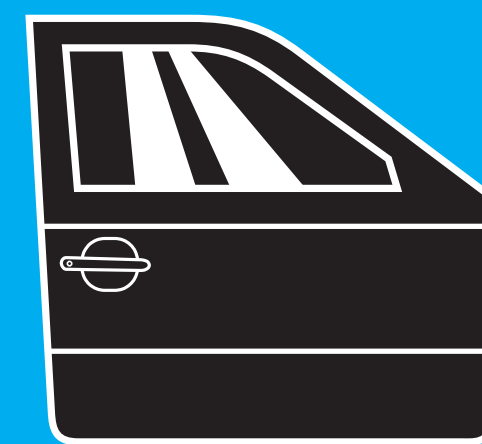
## FLUIDS.

Check for leaks and top up your levels of engine oil, windscreen wash and coolant.



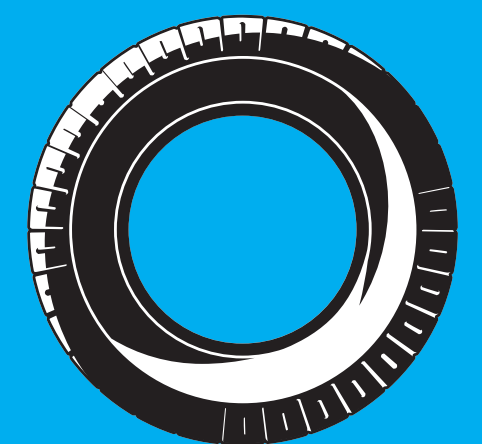
## BATTERY.

The heart of your vehicle. Keep fully charged to ensure all the integral parts such as lights, wipers and starter motor work.



## DOOR LOCKS.

Check their condition and spray WD40 to keep in working order.



## TYRES.

As your only connection with the road, it is essential that you have your tyres professionally checked for alignment, depth, condition and pressure. Ask us for your free tyre check.

## WINTER SURVIVAL KIT.

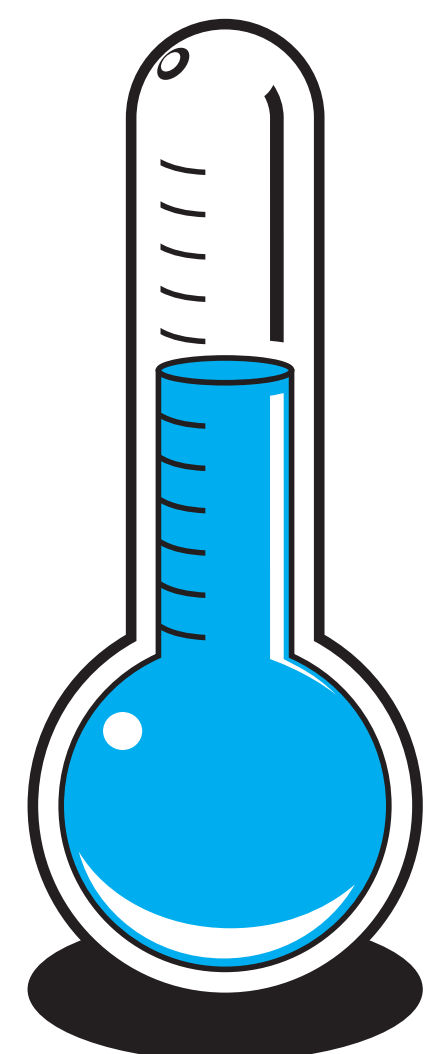
It's a good idea to always carry these accessories in your car during the winter months.

- ADDITIONAL WARM CLOTHING AND BOOTS
- BLANKETS
- TORCH AND SPARE BATTERIES
- FLASK OF HOT DRINK
- SPARE PHONE CHARGER
- SHOVEL
- SUNGLASSES (GLARE)
- HIGH VISIBILITY JACKET
- DE-ICER & SCRAPER
- FIRST AID KIT
- CHOCOLATE & SNACKS



## 7°C REASONS TO FIT GOODYEAR COLD WEATHER TYRES.

1. Improved performance at temperatures below 7°C
2. Greater aquaplaning resistance on wet and slushy roads
3. Shorter stopping distances on ice, snow and wet roads
4. No loss of performance or comfort in normal conditions
5. Increased tyre life
6. Legal requirement when driving abroad
7. Proven technology from a brand you can trust



For even more information go to [www.hiqonline.co.uk/Tyres/Cold-Weather-Tyres](http://www.hiqonline.co.uk/Tyres/Cold-Weather-Tyres)

# HiQ

Fast fit you can be sure of